

CRAFT

ideas



Create Your Style
is Celebrating
120 Years of

Swarovski

SWAROVSKI

CREATE
YOUR STYLE

Swarovski crystals are available at many of your favorite
**LOCAL CRAFT RETAILERS
AND BEAD SHOPS!**

From Beads, Pendants & Crystal Pearls to Flat Back and Hot Fix Crystals, you can find a variety of shapes, colors and sizes for all your jewelry and accessory designs.



CREATE-YOUR-STYLE.COM

contents

15

6 The History of Swarovski
120 Years of Sparkling History.

10 New Products
Heritage. Tradition. The Original: The Edelweiss Collection.

13 Happy Anniversary Golden Shadow Necklace
This triple-strand necklace combines the ever so popular Swarovski Mini Beads with Swarovski's best-selling coating, Crystal Golden Shadow, to create an elegant, yet easy-to-make design.

14 Mini Bead Crystal AB Necklace
Swarovski mini beads in Crystal AB, the popular

coating developed in collaboration with Christian Dior in 1956, give the metal spacer beads and black leather cord an elegant, yet edgy vibe.

15 Rue de Rivoli Necklace
Stunning and simple: Make this sparkling necklace in a flash and wear it to your next anniversary party!

16 Crystal Patina Rivoli Drops
The Swarovski Patina effects help you create vintage and estate-style jewelry in a variety of hues. These Rivoli Drops are made with Swarovski Round Stones and Beads in the Crystal Black Patina effect for an elegant and trendy look.

16



contents



17

| ON THE COVER

17 Infinity X Infinity Choker

The new Swarovski Infinity Pendant mixed with golden infinity links combine to create a classic necklace for all time.

18 Triple Infinity Earrings

The never-ending Swarovski Infinity Pendants make for a fashion trend that offers chic style and a lasting impression.

19 Ring In Our Anniversary

Statement rings can be made with a variety of Swarovski Round Stones, Fancy Stones, and Flat Back Stones.

20 Showers of Edelweiss Necklace and Earrings

The new Swarovski Edelweiss Pendants combine beautifully with the Swarovski Mini Beads to create a subtle, yet striking statement piece.

22 Field of Edelweiss Compact

Create this beautiful compact for one-of-a-kind gift giving that is sure to please!

23 Crystallized Edelweiss Flip-Flops

Crystallize your flip-flops for sparkling summertime fun whether you're dancing through the fields in Austria or just lounging by the pool!

24 Crystallized Edelweiss Cell Phone Case

Crystals add a flair of excitement to everything! Crystallize an ordinary cell phone or tablet case that will be sought after by all of your friends.

CRAFT ideas

AMOS MEDIA

aryder@amosmedia.com

Customer Service (866) 222-3621

Advertising (800) 834-5479

EDITORIAL

Chief Editor Annie Ryder
Managing Editor..... Molly Goad
Staff Writer..... Jennifer Lenhart

CREATIVE SERVICES

Creative Services Supervisor Jeff McCuiston
Art Director..... Brian Hertel
Ad Design Supervisor..... Vaudine Hampton

PRODUCTION / SCANNING & IMAGING

Systems Manager Bryan Klingshirm
Production Supervisor Steve Burleson
Production Support Technician Jennifer Bernardi
Photography Brian Hertel
Scanning & Imaging Technicians Lori Billing, Ray Wilder

ADVERTISING SALES

Adv. Op./Dlr Prod. Sales Mgr. (800) 645-7456 Margie Bruns
Sales Director, East (312) 754-9967 Stephanie Campana
Sales Director, Midwest (312) 754-9965 Mike Mandozzi
Sales Director, West & FL (312) 754-9968 Eric Roth
Sales Rep., East (312) 754-9972 David Pistello
Sales Rep., Midwest, Canada (866) 468-1622 Brenda Wyen
Sales Rep., West & FL (312) 754-9966 Victoria Hardy
Adv. Customer Service Rep (800) 834-5479 Becky Schloss

CIRCULATION / DISTRIBUTION CENTER

Distribution Manager Mark Shipman
Expeditors James King, Tom Suttles, Kathy Wise
Product Coordinator Derek Dittmer
Customer Service Reps Nicole Ingle, Kristi Mwilitsa,
Phyllis Stegemoller
Marketing Intern David Romano

CRAFTIDEAS.COM

eProduct Manager Kurt Moledor
Digital Development Specialist Jared Wolf



AMOS MEDIA

911 Vandemark Road/P.O. Box 926

Sidney, OH 45365

President Jeff Greisch
Vice President Dean Horowitz
Chief Financial Officer..... Jane Volland
Director of Finance & Support Services..... Mary Holthaus

Craft Ideas®

www.CraftIdeas.com

Entire contents copyright 2015 by Amos Media

TRADEMARKS

Many product names mentioned in *Craft Ideas* magazine are trademarks or registered trademarks of their respective companies. The names are used in an editorial fashion only and to the benefit of the trademark owner, with no intention to infringe on the trademarks.

SWAROVSKI

CREATE
YOUR STYLE

2015 CREATE YOUR STYLE FALL TRENDS DESIGN CONTEST

Enter your sparkling design to be
eligible to win Swarovski crystals!

Contest opens July 1st and ends August 15th.

Visit CREATE-YOUR-STYLE.com and the below
retailers to download our eBook for trend information
and inspiration and to find the newest Swarovski
crystal innovations.

- FIREMOUNTAINGEMS.COM
- ARTBEADS.COM
- FUSIONBEADS.COM
- RINGS-THINGS.COM
- DREAMTIMECREATIONS.COM
- SHIPWRECKBEADS.COM
- BEADAHOLIQUE.COM
- BLUEMUD.COM
- BEADWHOLEALER.COM
- ALACARTECLASPS.COM
- RAINBOWSOFLIGHT.COM
- JEWELRYSUPPLY.COM
- BEADUCATION.COM
- EUREKACRYSTALBEADS.COM

*Designed by
Susan Kazarian*



For more information about Swarovski crystals
scan QR-code with your SmartPhone or go to
<http://swarovski.com/Fall2015-DesignContest>



CREATE-YOUR-STYLE.COM

The History of Swarovski

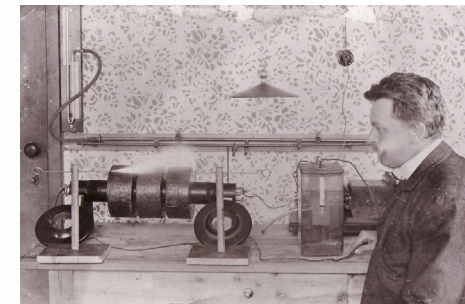


For 120 years, Swarovski has provided sparkle to the world of fashion, jewelry, architecture, and more. This brief account of Daniel Swarovski and the company takes you from the mid-1800s to today.

THE 1800S

Daniel Swarovski was born in 1862 in Bohemia into a family that owned a crystal-cutting company. Now part of Czech Republic, the region has a long history of crystal craftsmanship. As a young man, Daniel also completed an apprenticeship in metalwork. In 1883, Daniel formed a jewelry company with his future in-laws, the Weis family. By 1886, their Bohemia-based company had 70 employees, and couture clients included the House of Worth, clothing maker for Queen Victoria. Daniel married Marie Weis in 1887 and they had three sons: Wilhelm born in 1888; Fritz in 1890; and Alfred in 1891. All three boys would eventually go on to run the business founded by their father.

Daniel registered a patent for the crystal-cutting machine he created in 1891. As a young man, he was inspired by the inventions of Thomas Edison and Werner von Siemens and aimed to make crystals more freely. In 1895, Daniel and his partners moved from Bohemia to Wattens, Austria, in a bid to distance themselves from competitors and imitators. They were also attracted to the river — and snow-capped mountains — as a source of future hydroelectric power.



EARLY 1900S

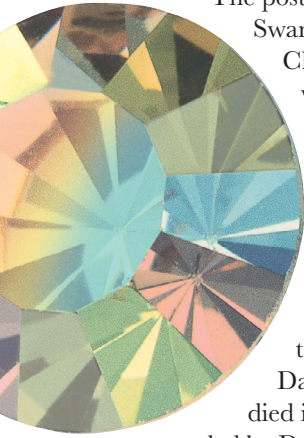
By 1905, the company had 220 employees, purpose-built company housing, and a hydroelectric power plant. In 1907, the Swarovskis finished building their family villa near the company headquarters. In 1911, Swarovski built its own glassworks and produced premium quality glass. From 1913 onward, they had no further need to import glass from Bohemia. Shortages during World War I forced the company to produce grinding materials in house. The new Tyrolit tools division later became a leading manufacturer in the sector. During the 1920s, the business flourished in the glittering, postwar decade of the flapper, the Charleston, and the new fashions of the time. In response to women's shorter hairstyles, Swarovski created and patented crystal-embellished fabric headbands in 1931, which were also used as trimming for clothing.



The Swarovski headquarters in Wattens, Austria

Production came to a halt in the 1940s during World War II, but thanks to canny American partners who had stockpiled the crystals, sales remained robust in that region. The American costume jewelry label Trifari, as well as designers Elsa Schiaparelli and Hattie Carnegie, continued to buy stones during those dark days. The end of the war brought new opportunity. In 1949, the company founded Swarovski Optik, initially producing ophthalmic lenses and binoculars, rifle scopes, and telescopes, becoming a market leader in precision optics.

POST WORLD WAR II



The post-war years of the 1950s ushered in a boom for Swarovski. Designers including Coco Chanel and Christian Dior snapped up the crystals, along with Hollywood costume designers. Swarovski launched the Swaroflex brand in 1951, consisting of roadside safety reflectors based on 20 years of research and technology. In 1956, shortly before Daniel died at age 93, the ever-restless inventor collaborated with Christian Dior to create the Aurora Borealis coating, which allows crystals to shimmer with the colors of the rainbow. From 1960 to 1962, Daniel's three sons, Wilhelm, Fritz, and Alfred, died in quick succession, and the next generation, led by Daniel Swarovski II and Manfred Swarovski,

took over company management.

In 1966, Swarovski became part of a major cultural and diplomatic mission. The company's crystals adorned the "Sputnik" chandeliers designed by Hans Harald Rath that Austria gave to the New York Metropolitan Opera in gratitude for American aid following World War II. During the 1970s,

the oil crisis and prevailing hippie-chic mood in fashion spelled a difficult decade for Swarovski.

To combat this mood, Swarovski came up with a new creation: collectible miniatures. The Ur-Maus, (sparkling crystal mouse), designed by Manfred Swarovski from chandelier parts, was the first of



these. In 1974, the company developed its Hotfix technology, allowing crystals to be applied directly to fabric and other materials without metal or plastic settings.

In 1977, Swarovski launched a range of crystal components for chandeliers and lighting called STRASS® Swarovski® Crystal. Today, these are used in classic chandeliers, like those in Versailles or at the Metropolitan Opera in New York.

During the 80s, after years of supplying jewelers with Swarovski crystals, the company began creating in house collections such as Daniel Swarovski Paris and The Jewelers Collection. Today, jewelry is the company's biggest division, generating 75 percent of all crystal sales. In 1989, Swarovski replaced its original Edelweiss logo with a new swan logo, which remains visible on the company's packaging and storefronts worldwide. The Swarovski Crystal Society (SCS) was founded in 1987 for crystal collectors, a passion shared by 400,000 members in 35 countries today.

Swarovski created crystal mesh fabric in 1993, and in 1995, the company unveiled Swarovski Crystal Worlds in Wattens, a cross between a museum and a theme park that allows visitors to experience the universe of crystals. The Swarovski Collective,

SWAROVSKI IN HOLLYWOOD & ENTERTAINMENT

- In 1939, Dorothy wears the Ruby Slippers with Swarovski-covered bows in "The Wizard of Oz."



- In the 1950s, Swarovski

crystals appear in films like "Gentlemen Prefer Blondes" and "Sabrina."

- Audrey Hepburn wears Swarovski jewels — not Tiffany ones — in the 1961 film "Breakfast at Tiffany's" and in 1962, Marilyn Monroe sings



"Happy Birthday, Mr. President" to John F. Kennedy wearing a Jean Louis gown that shimmers with 2,500 Swarovski crystals.

- Swarovski has appeared in eight James Bond 007 films over the last 40 years. In 1977's "The Spy Who Loved Me," Bond girl Barbara Bach wore an evening gown adorned with Swarovski crystal. Swarovski also adorned the costumes, jewelry, and movie sets of "Octopussy" (1983), "License to Kill" (1989), "GoldenEye"



(1995), "Die Another Day" (2001), "Casino Royale" (2006), "Quantum of Solace" (2008), and "Skyfall" (2012).

- Michael Jackson's famous white, crystal-embellished glove made its debut as the

the brainchild of Nadja Swarovski, launched in 1999 with help from stylist and muse Isabella Blow. The collective aims to support emerging and established fashion designers, such as Lee Alexander McQueen, by providing them with crystals and financial support.

2000

Swarovski introduced a pearl with a crystal core in 2000, giving it the weight, texture, and shine of a natural pearl. In 2002, the brand launched its Crystal Palace initiative, asking designers including Tom Dixon, Tord Boontje, and Yves Béhar to elevate lighting to an art form. Atelier Swarovski, a collection of jewelry collaborations with ready-to-wear and other designers, launched in 2007. Collaborators included Zaha Hadid, Jason Wu, and Viktor & Rolf. Swarovski also began making the crystalline curtain for the annual Academy Awards ceremony in Los Angeles.

Swarovski continued to work with architects in 2014, creating the giant illuminated arches at the entrance to Monditalia, one of three main exhibitions at the International Architecture Exhibition at la Biennale di Venezia, which was curated by Rem Koolhaas. Also in 2014: Swarovski's Tiuterra Crystal — a combination of crystal and meteorite fragments — was created in collaboration with the Austrian Space Forum. Three of the crystals were sent to the International Space Station.

2015 marks Swarovski's 120-year anniversary. Swarovski and the Las Vegas Grand Bazaar Shops currently host a Swarovski Midnight Celebration, featuring a 14-foot Crystal Starburst designed with 924 custom-cut sparklers and 1,800 points of LED light. The company's renovated Crystal Worlds is set to reopen after a \$37.3 million renovation.



singer moonwalked during the "Motown 25" TV special in 1983.

- Nicole Kidman wore a Swarovski crystal necklace in the 2001 film "Moulin Rouge."
- In 2013, Swarovski made a fresh foray into Hollywood as co-producer of its first film,

"Romeo and Juliet," with screenplay by Julian Fellowes and director Carlo Carlei.

- In 2012, Swarovski partnered with Christopher Kane, the designer who created a gold crystal mesh trouser suit worn by Stella Tennant for the London Olympics' Closing Ceremony.
- Approximately 150 hours were spent developing the perfect slipper for the new film version of "Cinderella" directed by Kenneth Branagh. Swarovski provided more than 1.7 million crystals

for more than 15 costumes, props, jewelry, accessories, hair, and makeup. The crystal color on the slippers is Crystal Blue Aurora Borealis.



- More than 1.7 million Swarovski crystals adorn Elton John's costumes, designed by Richard James, for his current show "The Million Dollar Piano" in Las Vegas.



- For the 2015 Oscars, Swarovski created three separate crystal curtains weighing 1,295 pounds in total.



NEW PRODUCTS

HERITAGE. TRADITION.
THE ORIGINAL.
THE EDELWEISS
COLLECTION.

TRADITION, PURITY, CHARACTER. These features have been deeply rooted in the DNA of Swarovski ever since it was first established in 1895. They are also qualities it shares with the most precious and rare, yet best-known flower of the Alps: the edelweiss. For this reason the company chose the Alpine edelweiss as its first corporate logo — and kept it for almost a century. Now celebrating its 120th anniversary, Swarovski presents the Edelweiss Family as a tribute to the company's Tyrolean home, with its rich culture and breathtaking surroundings. The stunning crystal reinterpretation of the iconic flower symbolizes the importance of origin in an increasingly globalized world, as well as the beauty that awaits those who dare to climb the highest mountains.



The Edelweiss Pendant and the Edelweiss Fancy Stone, Flat Back Hotfix and No Hotfix crystals are the first 3D edelweiss designs in full crystal.

Its precise facets, complex cut, and smoothly-rounded petals create the most detailed and realistic flower that has ever been available in crystal.



Pave Edelweiss Pendant and BeCharmed Edelweiss Pave Charm: A true Swarovski masterpiece! Each of the clear and colored crystals has been carefully set by hand, making every BeCharmed Charm a unique item. It is available in five different color combinations that mimic those of the natural edelweiss. The high craftsmanship of this piece is a true testament to Swarovski's core values.

THE INFINITE BEAUTY OF CRYSTAL

The magic of crystal tells a story with no beginning and no end. As a tribute to its 120th anniversary, Swarovski celebrates its past, present, and future, all symbolized in the endlessly entwined knot of the Infinity.

“Infinity” is a strong word that triggers powerful emotions. Similarly evocative, the Infinity Pendant sparkles with an intriguing, energetic stairway cut and the Pave Infinity Pendant sparkles with an intriguing Pave surface, both forever entwined in a loop with no beginning and no end with technological finesse and perfection.



happy anniversary golden shadow necklace

This triple-strand necklace combines the ever so popular Swarovski Mini Beads with Swarovski's best-selling coating, Crystal Golden Shadow, to create an elegant, yet easy-to-make design.

BY SUSAN KAZARIAN FOR
CREATE YOUR STYLE
24½"
CREATE-YOUR-STYLE.COM

MATERIALS

Swarovski Crystal Golden Shadow Mini Beads: 10x8mm (5051), 10; 8mm (5052), 20; 8mm (5053), 15; 8mm (5054), 15; 10x8mm (5055), 15; 12x8mm (5056), 10

Swarovski Vintage Gold Crystal Pearls (5810), 4mm, 35

TierraCast® Round Brass Cable Chain, 10mm, 12"

Gold or brass findings: crimp beads, 2x2mm, six; crimp covers, 3x3mm, six; lobster clasp; jump ring, 8mm

Beading wire, 48"

TOOLS

Jewelry pliers: round-nose, flat-nose
Wire cutters

BASIC SUPPLIES

Ruler

*tip

Make one strand of this necklace a few beads shorter and use the extra beads to make a matching pair of earrings. Set beads and pearls out on a bead board to see the pattern before stringing and crimping.



STEP 1

Cut 16" length of beading wire. String one end of wire through crimp bead, end loop in cable chain, and back through crimp bead; crimp to secure. Cut off excess wire. Attach crimp bead cover.

STEP 2

Slide on one Swarovski Vintage Gold Crystal Pearl, followed by two or three mini beads and another pearl. Continue adding beads and pearls in this manner, using 28 Swarovski Beads and nine Swarovski Crystal Pearls, beginning and ending with pearls. Crimp other end of wire to opposite end of cable chain using method from Step 1.

STEP 3

Repeat Steps 1 and 2 for second strand.

STEP 4

Repeat Steps 1 and 2 for third strand, using all remaining beads and pearls.

STEP 5

Open middle link in cable chain; attach jump ring and lobster clasp.

mini bead crystal AB necklace

Swarovski Mini Beads in Crystal AB, the popular coating developed in collaboration with Christian Dior in 1956, give the metal spacer beads and black leather cord an elegant, yet edgy vibe.

BY SUSAN KAZARIAN FOR
CREATE YOUR STYLE
36"
CREATE-YOUR-STYLE.COM



MATERIALS

Swarovski Crystal AB Mini Beads:
Oval (5051), 8x6mm, 20; Round
(5052), 8mm, five; Square (5053),
8mm, 10

TierraCast® Antique Silver Deco
Barrel Separator Beads, 4x2mm, 11
Black leather cord, 1mm, 40"

TOOLS

Flat-nose pliers
Wire cutters or scissors

BASIC SUPPLIES

Ruler

*tip

Wrap necklace twice for a double strand-necklace or around your wrist for a trendy layered bracelet!

STEP 1

String beads as follows onto leather cord: barrel, Swarovski Oval, Swarovski Square, Swarovski Oval, Swarovski Round, Swarovski Oval, Swarovski Square, Swarovski Oval, barrel.

STEP 2

Slide first barrel 6" from end of cord; crimp in place. Slide other beads together; crimp final barrel to hold in place.

STEP 3

Repeat Steps 1 and 2 four times, crimping first barrel 3" from previous bead group.

STEP 4

Align beaded sections on both sides of necklace, trimming cord as needed. Crimp cord ends together using last barrel bead, making sure cords do not overlap.

rue de rivoli necklace

Stunning and simple: Make this sparkling necklace in a flash and wear it to your next party!

BY SUSAN KAZARIAN FOR
CREATE YOUR STYLE
16"
CREATE-YOUR-STYLE.COM

MATERIALS

Swarovski Crystal Vitrail Light Rivoli Crystal (1122), 18mm, three
TierraCast® Bright Gold Faceted Rivoli Link, 18mm, three
TierraCast® Bright Gold Deco Barrel Bead, 4x2mm, four
TierraCast® Bright Gold Twisted Hook Clasp
Jump rings, 8mm, two
Black leather cord, 1mm, 30"

TOOLS

Jewelry pliers: flat-nose, round-nose
Wire cutters or scissors
Two-part epoxy glue

BASIC SUPPLIES

Ruler

*tip

Use a shorter cord to create a matching bracelet. Use various colors and coatings of the Swarovski Round Stone (1122) to create this design to go with everything!



STEP 1

Mix two-part epoxy following manufacturer's instructions. Place small amount of glue in center of Faceted Rivoli Link. Place Rivoli Crystal into center of link; press to secure. Repeat with remaining Rivoli Crystals and Links. Set aside; let cure following manufacturer's instructions. Connect links together using jump rings.

STEP 2

Cut leather cord in half, string one piece through loop at end of link, and bring cord ends together evenly. Slide both ends through one Deco Barrel Bead, continuing down cord to 1/4" from link trio. Crimp to secure. Repeat on other side of necklace.

STEP 3

Thread cord ends on one side through Deco Barrel Bead, Twisted Hook Clasp loop, and back through Deco Barrel Bead. Slide cord and Deco Barrel Bead close to clasp loop and crimp bead to secure. Trim off excess cord.

STEP 4

Thread remaining cord ends through as in Step 3, forming loop of cord before sliding ends back through bead. Crimp to secure. Close necklace by hooking clasp through cord loop.

crystal patina rivoli drops

The Swarovski Patina effects help you create vintage and estate-style jewelry in a variety of hues. These drops are made with Swarovski Round Stones and Beads in the Crystal Black Patina effect for an elegant and trendy look.

BY SUSAN KAZARIAN FOR
CREATE YOUR STYLE
3"
CREATE-YOUR-STYLE.COM

MATERIALS

Swarovski Crystal Black Patina Rivoli Crystal (1122), two each: 12mm, 14mm

Swarovski Jet Briolette (5040), two each: 4mm, 8mm

Swarovski Crystal Black Patina Pendant (6010), 13x6.5mm, six

TierraCast® Sterling Silver Earwires, 0.53", two

TierraCast® Bright Rhodium Rivoli Links, two each: Faceted, 14mm; Twisted Round 1-3, 12mm

Jump rings, 4mm, eight

Jewelry wire, 20-gauge, 2"

TOOLS

Jewelry pliers: flat-nose, round-nose

Wire cutters

Two-part epoxy

BASIC SUPPLIES

Ruler

*tip

Use various colors and coatings of the Swarovski Round Stone (1122) to create these earrings to go with everything in your closet!



STEP 1

Mix two-part epoxy following manufacturer's instructions. Place small amount of glue in center of Faceted Rivoli Link. Place 14mm Rivoli Crystal into center of link; press to secure. Repeat with remaining Rivoli Crystals and Links for corresponding sizes. Set aside; let cure following manufacturer's instructions.

STEP 2

Attach Crystal Black Pendants from Twisted Round Rivoli Link loops using jump rings. Use one ring on outer pendants and two on center pendants.

STEP 3

Turn loop at end of wire. Slide on 8mm Briolette Bead; close with loop. Repeat to make two components. Attach loop of one component to top loop of 12mm Twisted Round Rivoli Link and other loop to 14mm Faceted Rivoli Link. Repeat for other earring.

STEP 4

Attach 4mm Briolette Bead to top of ear wire; attach ear wire to top loop of 14mm Faceted Rivoli Link. Repeat for other earring.

infinity x infinity choker

The new Swarovski Infinity Pendant mixed with golden infinity links combine to create a classic necklace for all time.

BY SUSAN KAZARIAN FOR
CREATE YOUR STYLE
18"
CREATE-YOUR-STYLE.COM

MATERIALS

Swarovski Crystal Golden Shadow Pendant (6792), 12

TierraCast® Bright Gold Infinity Links, 13

TierraCast® Bright Gold Large Classic Hook Closure

Gold jump rings, 10mm, 40

TOOLS

Jewelry pliers: flat-nose,
round-nose

STEP 1

Connect Infinity Links using two jump rings side-by-side to form chain. Add two jump rings to each end of chain. At one end, attach Classic Hook Closure.

STEP 2

Attach one jump ring to each pendant, leaving jump ring open.

STEP 3

Use jump rings to attach pendants to first and then second loop in fifth Infinity Link in chain. Working toward other end of necklace, continue adding remaining pendants to both loops of Infinity Links.

*tip

Increase the length of the choker by increments of 1¼" by adding one Infinity Link. You can also make this necklace with Swarovski Crystal Silver Night Infinity Pendants and silver infinity links to match the Triple Infinity Earrings on page 18.



triple infinity earrings

The never-ending Swarovski Infinity Pendants make for a fashion trend that offers chic style and a lasting impression.

BY SUSAN KAZARIAN FOR
CREATE YOUR STYLE
3"
CREATE-YOUR-STYLE.COM

MATERIALS

Swarovski Crystal Silver Night Pendant (6792), 18mm, six

TierraCast® Antique Pewter Infinity Link, two

Ear wires, two

Jump rings: 6mm, 32; 8mm, four; 10mm, four

TOOLS

Jewelry pliers: flat-nose, round-nose

*tip

You can also make this necklace with Swarovski Crystal Golden Shadow Infinity Pendants and gold Infinity Links to match the choker on page 17.



STEP 1

Make two six-ring chains and one two-ring chain of 6mm jump rings. Slide all three chains onto 8mm jump ring with shortest chain in center; attach 8mm jump ring to ear wire.

STEP 2

Attach Swarovski Infinity Pendant to end of short chain using 8mm jump ring.

STEP 3

Attach Infinity Link to earring using bottom jump rings of two longer chains.

STEP 4

Attach Swarovski Infinity Pendant to each side of Infinity Link using 8mm jump ring.

STEP 5

Repeat Steps 1 through 4 for second earring.

ring in our anniversary

Statement rings can be made with a variety of Swarovski Round Stones, Fancy Stones, and Flat Back Stones.

BY SUSAN KAZARIAN FOR
CREATE YOUR STYLE
size varies
CREATE-YOUR-STYLE.COM



MATERIALS

Swarovski Crystal Fancy Stone (4753), 14mm

Swarovski Crystal AB Flat Back Stone (2753), 14mm

Swarovski Chaton Round Stones (1088): Crystal, PP21, 14; Crystal AB, PP21, 18; Crystal AB, PP28, six

Swarovski Plastic Trimming, PP24: crystal, white, transparent

Swarovski White Ceralun® Epoxy Clay (9030), 20 grams

Adjustable-size ring components

TOOLS

Jacquard Pearl Ex Powder Pigment: Silver, Gold

Small paintbrush

BASIC SUPPLIES

Tweezers or wax stick

Rubber gloves

Alcohol wipes

*tip

Although it takes 24 hours for the Ceralun® to cure completely, it will start to harden in about 45 minutes, so be sure to only mix as much as you need to avoid waste. Also, it's recommended to use only the larger Flat Back Stones so they don't get "lost" in the Ceralun®.

silver

STEP 1

Wearing rubber gloves, mix approximately 2 grams of each component from Swarovski Ceralun® package. Form clay into ball and press into ring base, forming domed top in preferred size.

STEP 2

Using tweezers or wax stick, begin applying stone embellishments. Place Crystal AB Flat Back Stone in center of dome, pushing far

enough into clay to cover girdle of stone. Apply vertical rows of three Crystal AB PP21 Round Stones from ring base to side indentations on center stone. Finish by adding one Crystal AB PP28 Round Stone between each vertical row.

STEP 3

Using small paintbrush or fingertip, coat Ceralun® with Silver pigment powder. Clean any residue using alcohol wipe. (Note: Wipe off stones even if they look clean. Residue cannot be removed once clay dries.) Let cure undisturbed for 24 hours.

gold

STEP 1

Wearing rubber gloves, mix approximately 2 grams of each component from Swarovski Ceralun® package. Form clay into ball and press into ring base, forming domed top in preferred size.

STEP 2

Using tweezers or wax stick, begin applying stone embellishments. Place Crystal Fancy Stone in center of dome, pushing far enough into clay to cover girdle of stone. Apply row of Plastic Trimming along bottom of dome, next to ring base. Finish by adding Crystal PP21 Round Stones just above Plastic Trimming.



STEP 3

Using small paintbrush or fingertip, coat Ceralun® with Gold pigment powder. Clean any residue left behind on stones using alcohol wipe. (Note: Wipe off stones even if they look clean. Residue cannot be removed once clay dries.) Let cure undisturbed for 24 hours.

showers of edelweiss necklace & earrings

The new Swarovski Edelweiss Pendants combine beautifully with the Swarovski Mini Beads to create a subtle, yet striking statement piece.

BY SUSAN KAZARIAN FOR
CREATE YOUR STYLE
necklace, 19½"; earrings, 3¼"
CREATE-YOUR-STYLE.COM

*tip

Lengthen the overall necklace 2" by adding one Swarovski Bead 5051 and 5052 to each side.

*tip

Create a simple charm bracelet by attaching the Edelweiss pendants to a heavy-link chain with 6mm and 9mm jump rings. Cut chain and add a lobster clasp to one end.



MATERIALS

necklace
Swarovski Pendant (6748/G):
Crystal Blue Shade, 14mm, three;
Crystal, 28mm

Swarovski Crystal Pendant (6748),
18mm, two

Swarovski Mini Beads: Crystal
Round, 6mm, 14; Crystal Blue
Shade Oval, 10x8mm, 16

TierraCast® Antique Pewter 12
Hole End Bar Link

Jump rings: 8mm round, six;
10mm round; 4mm oval, 14

Lobster clasp
TierraCast® Antique Silver Brass
Cable Chain, 2x6mm, 7"

Jewelry wire, 20-gauge, 30"

earrings

Swarovski Crystal Blue Shade
Pendant (6748/G), 18mm, two

Swarovski Crystal Pendant (6748),
14mm, two

Swarovski Crystal XILION Bicone,
4mm, two

TierraCast® Antique Silver 3 Hole
End Bar Link

Jump rings: 8mm round, four;
4mm oval, eight

TierraCast® Antique Silver Brass
Cable Chain, 2x6mm, 8"

TierraCast® Sterling Silver
Earwires, 0.53", two

TOOLS

Jewelry pliers: round-nose,
flat-nose

Wire cutters

BASIC SUPPLIES

Ruler

necklace

STEP 1

Turn loop at end of wire, slide on Crystal Round Mini Bead, and turn loop at top of bead. Cut off excess wire. Repeat with all remaining Crystal Round Mini Beads and all Crystal Blue Shade Oval Mini Beads.

STEP 2

Make 15-link beaded chain by joining components from Step 1. Alternate oval and round components, beginning and ending with ovals. Repeat to make second chain. Attach both beaded chains to top loop in 12 Hole End Bar Link. Attach lobster clasp to one open end of beaded chain and 8mm round jump ring to other open end.

STEP 3

Cut cable chain lengths: $\frac{1}{4}$ " (two links); two $\frac{3}{4}$ " (five links); $1\frac{1}{4}$ " (8 links); $1\frac{3}{4}$ " (11 links).

STEP 4

Attach 8mm round jump ring to each Swarovski Pendant; attach 4mm oval to each 8mm round jump ring.

STEP 5

Attach blue pendant components to 12 Hole End Bar Link. Attach 14mm component from Step 4 to $\frac{1}{4}$ " chain length; attach other end of chain to first hole in bar using 6mm oval jump ring. Repeat, attaching another 14mm component to $\frac{3}{4}$ " chain length; attach other end of chain to third hole in bar. Repeat again, attaching last 14mm component to $1\frac{1}{4}$ " chain length; attach other end of chain to fifth hole in bar.

STEP 6

Using same method as Step 5, attach one 18mm pendant component to remaining $\frac{3}{4}$ " chain length; attach other end of chain to next-to-last hole in bar. Attach remaining 18mm pendant component to fifth hole from end of bar.



STEP 7

Attach 28mm pendant component to bottom of remaining chain length. Attach 6mm oval jump ring through each of two center holes in bar. Using 6mm oval jump ring, join open end of chain to both center jump rings. Close all jump rings securely.

earrings

STEP 1

Attach 8mm jump ring to each Swarovski Pendant. Attach 4mm jump ring to each 8mm jump ring.

STEP 2

Cut two $1\frac{3}{4}$ " and two $\frac{3}{4}$ " chain lengths. Attach $1\frac{3}{4}$ " chain to outside holes in each 3 Hole Bar Link using 4mm jump rings. Repeat process to attach $\frac{3}{4}$ " chains to inside holes using 4mm jump rings. Using 4mm jump rings, attach larger pendants to shorter chains and smaller pendants to longer chains.

STEP 3

Slide Crystal XILION Bicone onto ear wire. Open loop at bottom of ear wire; attach to top loop in bar link. Repeat for other ear wire.

field of edelweiss compact

Create this beautiful compact for one-of-a-kind gift giving that is sure to please!

BY SUSAN KAZARIAN FOR
CREATE YOUR STYLE
size varies
CREATE-YOUR-STYLE.COM



MATERIALS

Swarovski Crystal Fancy Stones (4753): 14mm, six; 23mm

Swarovski XIRIUS Crystal Chaton Round Stones (1088), PP21, 100

Swarovski White Ceralun® Epoxy Clay (9030), 20 grams

Compact

TOOLS

Jacquard Pearl Ex Pink Gold Powder Pigment

Small paintbrush

BASIC SUPPLIES

Tweezers or wax stick

Rubber gloves

Alcohol wipes

*tip

Ceralun® Epoxy Clay will adhere to almost anything and create a permanent bond. Use it with Swarovski Chatons and Fancy Stones to embellish a variety of jewelry designs, home décor items, and accessories.

STEP 1

Wearing rubber gloves, mix approximately 4 grams of each component from Swarovski Ceralun® package following manufacturer's instructions. Form clay into ball and press into compact lid, forming domed top.

STEP 2

Using tweezers or wax stick, begin applying stone embellishments. Place large Crystal Fancy Stone in center of dome, pushing far enough into

clay to cover girdle of stone. Apply smaller Crystal Fancy Stones around center stone. Finish by filling in around Fancy Stones using Crystal Chatons.

STEP 3

Using small paintbrush or fingertip, coat Ceralun® with Pink Gold powder pigment. Clean any residue left behind using alcohol wipe. (Note: Wipe off stones even if they look clean. Residue cannot be removed once clay dries.) Let cure undisturbed for 24 hours.

crystallized edelweiss flip-flops

Crystallize your flip-flops for sparkling summertime fun, whether you're dancing through the fields of Austria or just lounging by the pool!

BY SUSAN KAZARIAN FOR
CREATE YOUR STYLE
size varies
CREATE-YOUR-STYLE.COM

MATERIALS

Plain flip-flop sandals

Swarovski Crystal XILION Rose Flat Back Hotfix (2038), SS5 or SS6, 14

Swarovski Crystal AB Flat Back Hotfix (2753), 10mm, 16

TOOLS

Two-part epoxy

BASIC SUPPLIES

Rubber gloves

Tweezers or wax stick

Toothpicks

Small plastic disposable cups

Alcohol wipes

*tip

The epoxy will dry fast so don't mix too much at once. Although it will start to dry within a few minutes, it takes 24 hours to cure completely. Mix glue on a sturdy piece of paper or cardboard if disposable plastic cups aren't available.



STEP 1

While wearing gloves, mix two-part epoxy in plastic cup following manufacturer's instructions. Apply small drop of epoxy where stone will be placed on sandal using toothpick. Apply Flat Back Hotfix Stone to epoxy drops on sandal band using tweezers or wax stick. Press stones firmly in place. (Note: Using too much glue will result in stone sliding off sandal and/or glue being visible.)

STEP 2

Clean residue using alcohol wipe. (Note: Wipe off stones even if they look clean. Residue cannot be removed once glue dries.)

STEP 3

Let cure undisturbed for 24 hours.

crystallized edelweiss cell phone case

Crystals add a flair of excitement to everything! Crystallize an ordinary cell phone or tablet case that will be sought after by all of your friends.

BY SUSAN KAZARIAN FOR
CREATE YOUR STYLE
size varies
CREATE-YOUR-STYLE.COM



MATERIALS

Cell phone or tablet case
Swarovski Flat Back Hotfix Stones (2753): White Opal, 10mm, five;
Crystal Silder Shade, 10mm, five;
Crystal, 14mm, four

TOOLS

Two-part epoxy

BASIC SUPPLIES

Rubber gloves
Tweezers or wax stick
Toothpicks
Small plastic disposable cups
Alcohol wipes

*tip

The epoxy will dry fast so don't mix too much at once. Although it will start to dry within a few minutes, it takes 24 hours for it to cure completely.

*tip

Mix epoxy on a sturdy piece of paper or cardboard if disposable plastic cups aren't available.

STEP 1

While wearing gloves, mix small amount of epoxy in plastic cup following manufacturer's instructions. Apply small drop where stone will be placed on case using toothpick. Apply Flat Back Hotfix Stones to epoxy drops on case using tweezers or wax stick. Press stones firmly in place. (Note: Avoid using too much epoxy, which can result in epoxy being visible at stone edge.)

STEP 2

Clean residue from stones using alcohol wipe. (Note: Wipe off stones even if they look clean. Residue cannot be removed once epoxy dries.)

STEP 3

Let cure for 24 hours.



Imagine it. Craft it. Share it.

Realize your
creative potential
with *Craft Ideas*.

Get 6 issues
for just **\$19.99!**

SUBSCRIBING IS EASY!
Enter code **CRYSTALS** at
CraftIdeas.com/Subscribe
Or call (866) 222-3621 (U.S. & Canada);
(937) 498-0809 (outside the U.S. & Canada).

*Canadian subscription rate for one year is \$29.49; International subscription rate for one year is \$36.99. U.S. funds only.

